

**USB Capture HDMI  
HDMI to USB3.0 Video Capture Device  
User' s Guide**

**Rev 1.2  
2016/12/06**

# Content

1	Preface.....	1
2	Minimum Hardware Configuration .....	1
3	Recommended Hardware Configuration.....	1
4	System Requirements.....	2
5	Hardware and Driver Installation .....	2
6	Components and Connection .....	3
6.1	Components .....	3
6.2	Connection .....	4
7	Video Capture Device Instruction.....	4
7.1	Display "Filter Properties Dialog Window" In Common Software .....	5
7.2	Display " Filter output pin " In Common Software .....	5
8	Audio Capture Device Instruction .....	6
9	Compatible Software Instruction .....	7

# 1 Preface

Thank you for purchasing USB Capture HDMI, HDMI to USB3.0 Video Capture Device!

USB Capture HDMI USB3.0 Device, it is easy to carry, has a superior performance, superior compatibility, simple installation and many other features. It can capture one HDMI 1080p60 input and output signal; compatible with Windows, Linux, Mac OS X and USB 2.0 interface, compatible with many USB 3.0 chipsets (Intel, Renesas, ASMedia, Fresco Logic), compatible with expanded USB 3.0 interface via PCIe Gen1.1 x1; the HDMI video capture meets UVC and UAC standard, without having to install drivers and settings, the real PnP, easy to use.

## 2 Minimum Hardware Configuration

- Intel Core Solo
- 1G of RAM
- Available USB3.0 interface

## 3 Recommended Hardware Configuration

- Intel Core i5
- 2G of RAM
- Available USB3.0 interface

## 4 System Requirements

System should be one of the following systems (x86 version or x64 version):

- Microsoft Windows Server 2003
- Microsoft Windows Server 2008 R2
- Microsoft Windows 7
- Microsoft Windows 8, 8.1
- Microsoft Windows 10
- Linux (Kernel version 2.6.38 and above)
- OS X (10.8 and above)

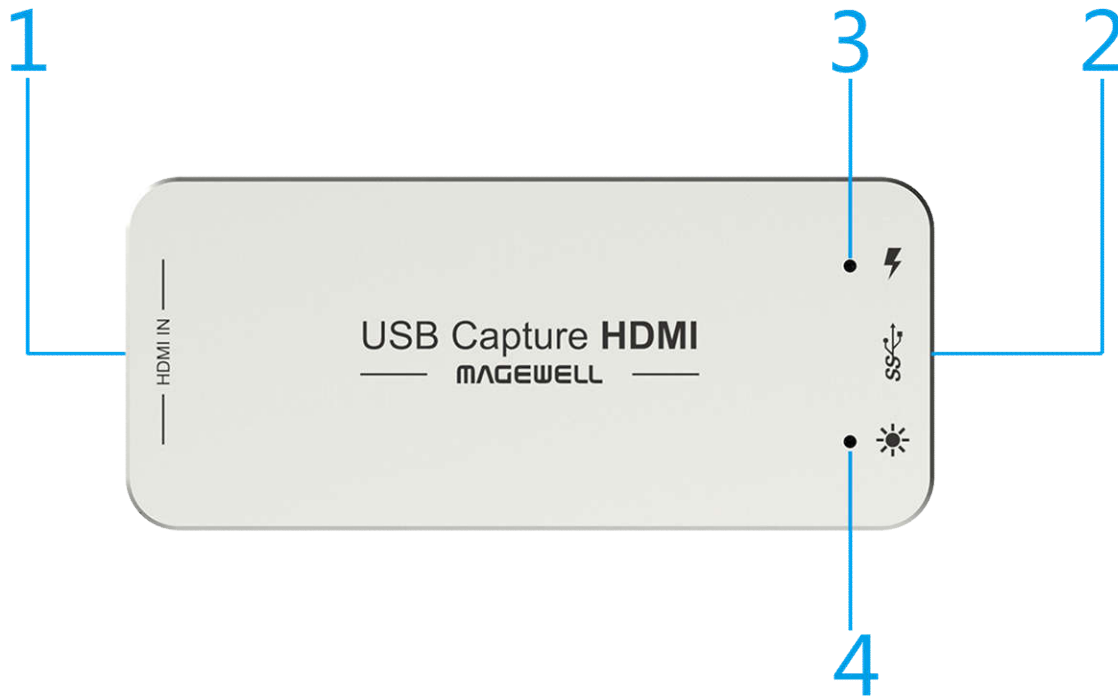
## 5 Hardware and Driver Installation

- USB Capture HDMI USB3.0 device supports hot-plugging/swap. Insert the USB3.0 cable head to USB3.0 interface, the other side of the cable into your computer's USB3.0 interface.
- It's PnP devices, without having to install drivers, if POWER and ACTION lights lit, which means it working properly

**Recommendation:** In actual use, first plug HDMI cable, then plug the USB3.0 interface. Because an HDMI signal sources are often not reliable grounding, Ground and the computer will be relatively large voltage difference, it may cause the signal source or capture not working properly.

# 6 Components and Connection

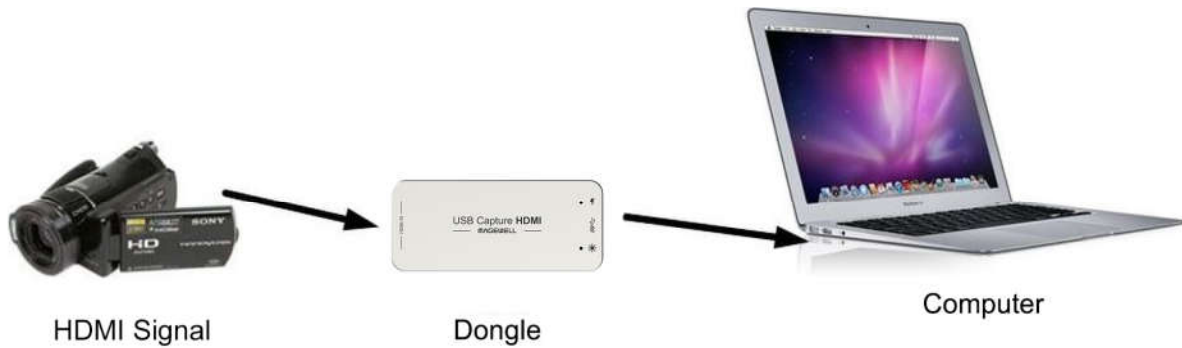
## 6.1 Components



*Figure 1, components*

1. HDMI video input interface
2. USB 3.0 capture output
3. Power Power indicator
4. Action Working lights

## 6.2 Connection



*Figure 2, connection*

## 7 Video Capture Device Instruction

USB Capture HDMI is based on UVC (USB video class), UAC ( USB audio class ) STANDARD, without having to install drivers and settings.

Different types of operating systems compatible with the corresponding interface:

Windows: DirectShow, DirectSound

Linux: V4L2 / ALSA

.....

In Windows, for example, will have a new image device:

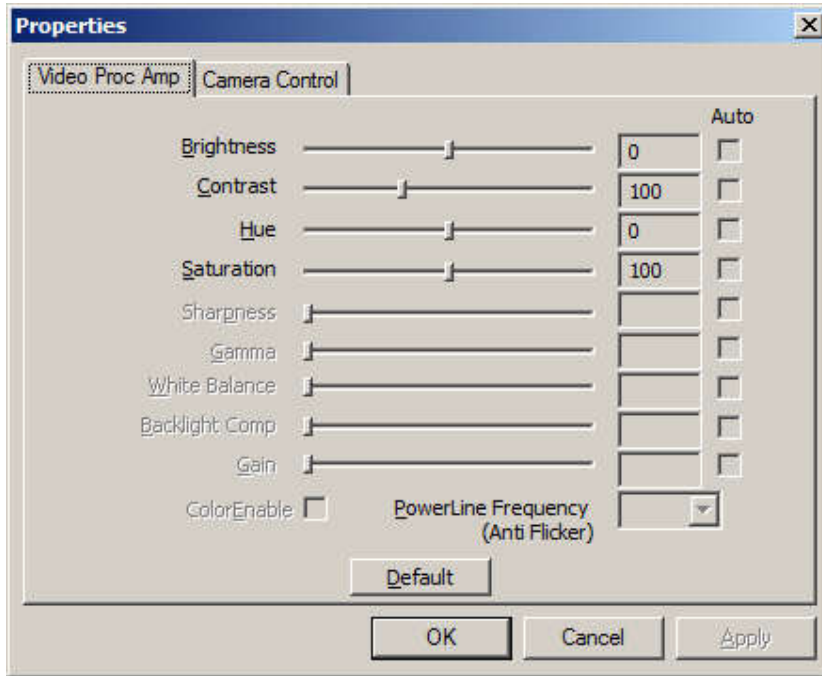
- USB Capture HDMI Video

USB Capture HDMI provides screen brightness, contrast, hue, saturation, and other options set by DirectShow "filters" dialogue box to set these options.

## 7.1 Display "Filter Properties Dialog Window" In Common

### Software

**AMCAP:** Double click "AmCap.exe", choose HD video device " USB Capture HDMI Video " in "Devices" menu, then click "Video Capture Filter ..." in "Settings" menu, pop-up " Filter Properties dialog window".



*Figure 3, Video property page*

- In the " Proc Amp" panel, you can set the brightness, contrast, hue, saturation, and other relevant parameters

## 7.2 Display " Filter output pin " In Common Software

**AMCAP:** Double click "AmCap.exe", choose HD video device " USB Capture HDMI Video " in "Devices" menu, then click "Video Capture Pin ..." in "Settings" menu, pop-up " Filter output pin" window.

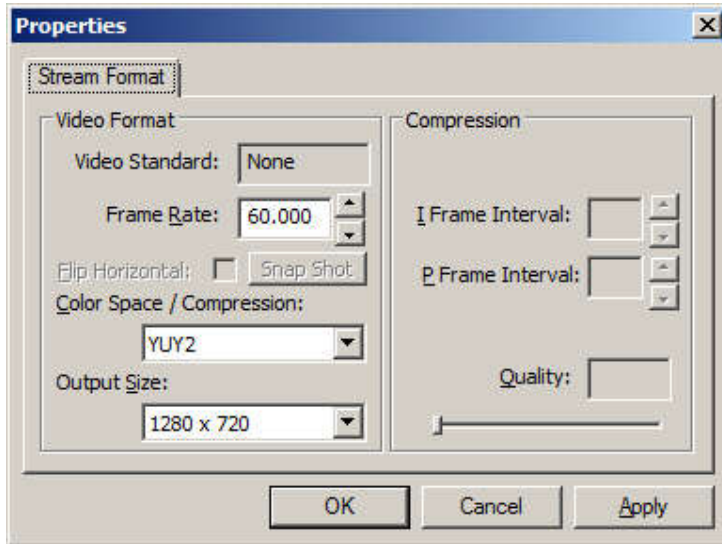


Figure 4, “Filter output pin “page

- **Frame Rate:** Set the output frame rate, currently supports 25/29.97/30/50/59.94/60 fps
- **Color Space / Compression:** currently offers two kinds of color spaces, YUY2 and RGB 24
- **Output:** Set the screen output size, resolution is currently supported 640x480/720x480/720x576/768x576 / 800x600/1024x768/1280x720/1280x800/1280x960/1280x1024/1368x768 / 1440x900/1600x1200/1680x1050/1920x1080/1920x1200, the default output is 1920 \* 1080.

## 8 Audio Capture Device Instruction


For Windows as an example, USB Capture HDMI is based on the Microsoft DirectShow interface. After installation in operating system, the relevant audio devices will be added on. Any software which is compatible with DirectSound, DirectShow can use the recording device for capturing sound.

In Windows7, for example, will show a new audio device:

- USB Capture HDMI Audio



Through system "**Volume Control**" to adjust recording volume, specific steps as follows:

1. In system notification icon area on right corner double-click "" button to pop-up "**Open Volume Control**" window.
2. In the pop-up display recording equipment list, select "Digital Audio Interface (USB Capture HDMI Audio)", click the "Properties" button, the system will pop up the corresponding device's properties dialog box
3. In Properties dialog box, select "**Levels**" property page, then you can operate volume control and "**Quiet**" according to your requirement.

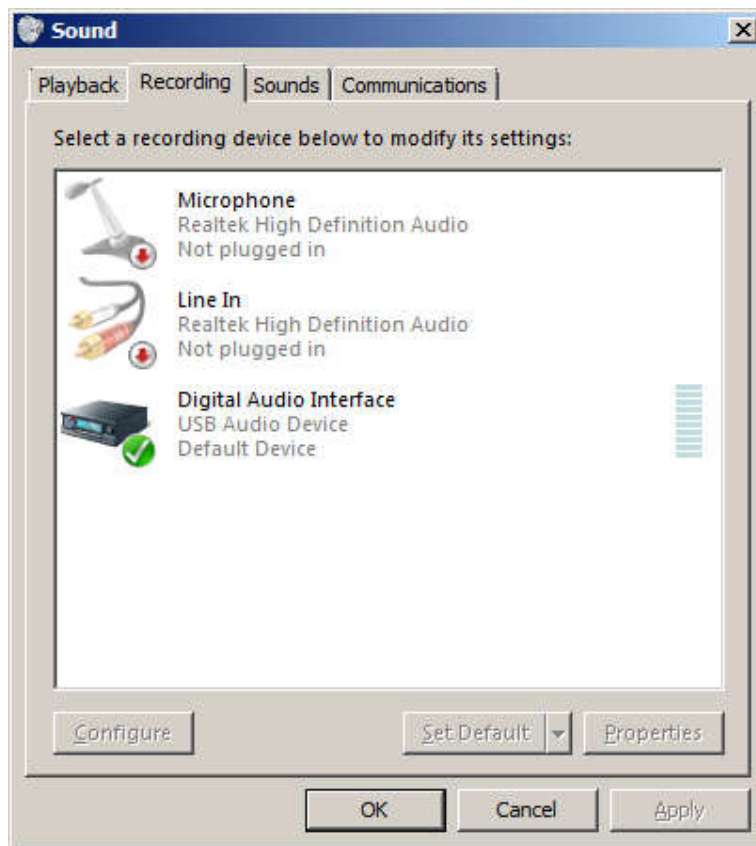


Figure 5 , Windows 7 Recording Device Properties dialog box

## 9 Compatible Software Instruction

USB Capture HDMI is currently compatible with the following capture software (tested):

- Windows Media Encoder (Windows)
- Adobe Flash Media Live Encoder (Windows, OS X)
- Real Producer Plus (Windows)
- VLC (Windows, OS X, Linux)
- QuickTime Broadcaster (OS X)
- QuickTime Player (OS X)
- Wirecast (Windows, OS X) etc...