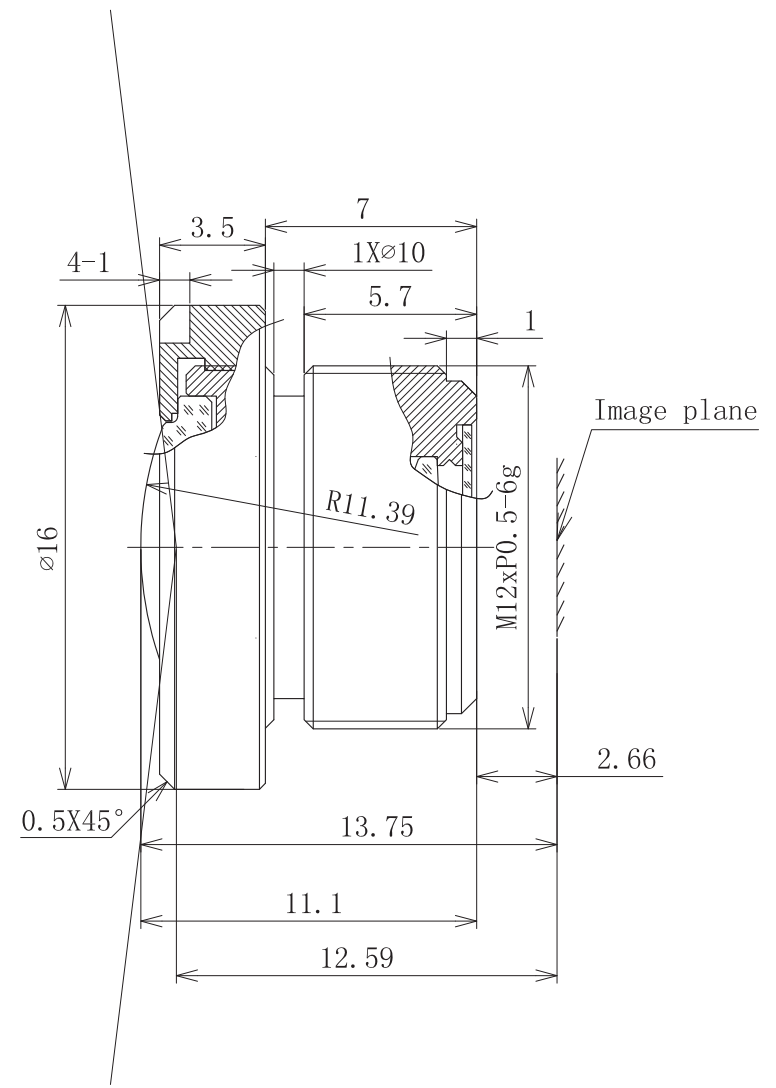
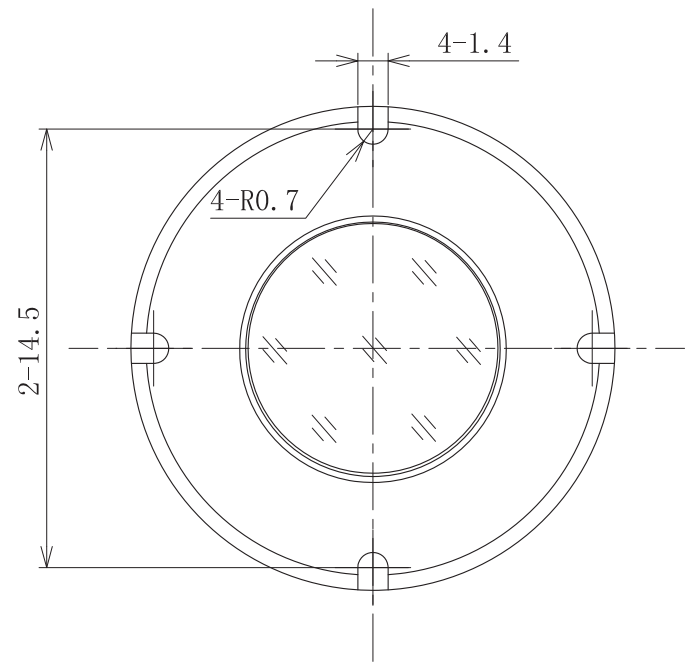


PART NO.	BL021225MP13IRC	REV.
		01

SPECIFICATION			
Sensor	1/3"(1/4") CCD/CMOS		
Image Fromat (HxV,D)	4.8x3.6,6/3.6x2.7,4.5		
EFL	2.12mm±5%		
FNo. F	2.5		
F.O.V.		1/3"	1/4"
	D.	166°	122.8°
	H.	133°	98°
	V.	98°	73°
Back Focal Length	3.89mm		
Lens Effective Diameter	Front	Ø8mm	
	Back	Ø5.4mm	
Lens construction	6-5		
Distortion	Optical	-83%	-44%
	TV	-38%	-21%
Resolution	80 lp/mm		
Relative Illumination		>42%	>55%
Iris	Fixed		
Max Chief Ray Angle	9.2°		
M.O.D	0.1m		
Mount	M12x0.5		
TTL	13.75		
Dimension (ØxL)	Ø16.0x11.1mm		
Weight	XX.X g		



REV.	DATE	DESCRIPTION	REVISED	APPR.	APPR.	NAME	DATE
3							
2						DRAW	
1						CHECKED	
0	14.11.05		XJL	GD	AUDI.		

Vision Dimension		
UNLESS TOLERANCE		
Single Part Size.±0.1	Portfolio Size.±0.2	